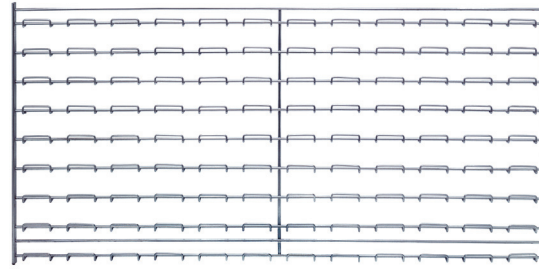


EXCLUSIVE!

WIRE LOUVERED PANEL

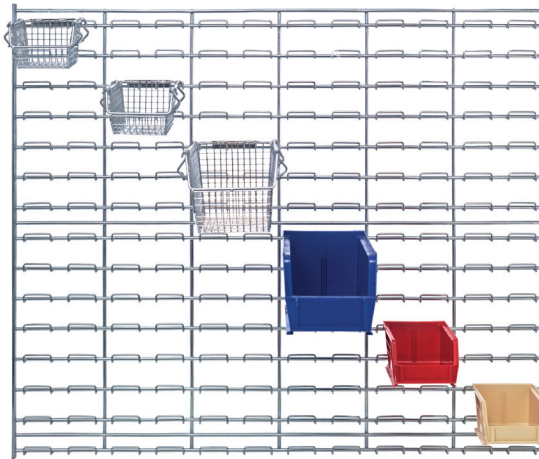
Quantum's new chrome wire louvered panels offer a perfect mounting solution for all plastic hanging and new wire mesh hanging bins. Unlike a standard louvered panel where there can be the occasional concern of dust or dirt accumulation, Quantum's exclusive offering of wire panels, available in three sizes, completely resist any buildup of dust or dirt. Included direct mounting clips enable fastening to any surface (*wall, wood, concrete, drywall, etc.*) a snap (*note: mounting screws are not included as they differ based on what type of surface the panels are being mounted to*). Offset mounting clips are also available, can be used in place of WLP-DMC if you want to have wire panel mounted offset (*away*) from a wall surface making it easier to clean behind the panel (*sold separately*). Manufactured of heavy-duty chrome wire, Quantum's wire panels will offer years of dependable and heavy-duty service.

HIGH VISIBILITY! EASY TO CLEAN! ALL WELDED!



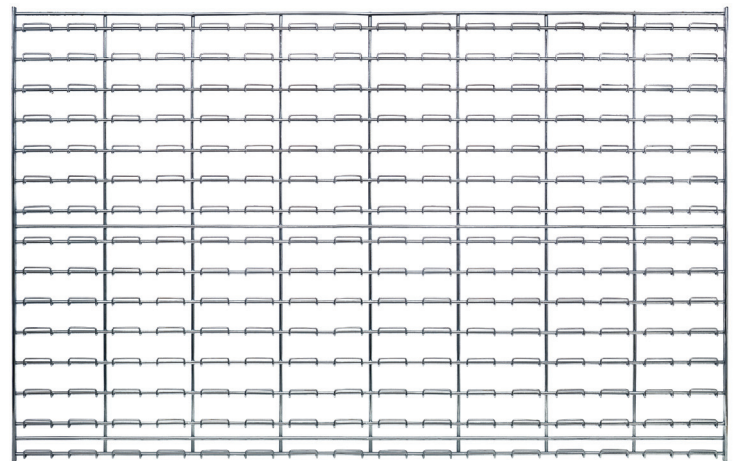
WLP-1836C

36" L x 18" H
Accepts all sizes of Ultra Stack & Hang Bins and Mesh Bins. 175 lb. load capacity.



WLP-3036C

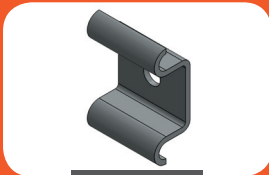
36" L x 30" H
Accepts all sizes of Ultra Stack & Hang Bins and Mesh Bins. 175 lb. load capacity. (Bins sold separately)



WLP-3048C

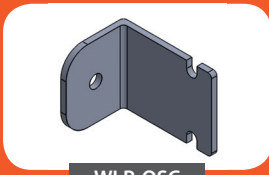
48" L x 30" H
Accepts all sizes of Ultra Stack & Hang Bins and Mesh Bins. 175 lb. load capacity.

ACCESSORIES



WLP-DMC

Direct Mount Clips - 4 pack
(Included with wire louvered panels)



WLP-OSC

Offset Mount Clips - 4 pack
(Sold separately)

MODEL NO.	DIMENSIONS L" x H"	CTN QTY	CTN WGT
Wire Wall Mounted Louvered Panels			
WLP-1836C	36" x 18" Wire Louvered Panel	1	12 lbs
WLP-3036C	36" x 30" Wire Louvered Panel	1	19 lbs
WLP-3048C	48" x 30" Wire Louvered Panel	1	26 lbs

MODEL NO.	QUANTITY OF MESH BINS TO FIT LOUVERED PANELS										QUANTITY OF ULTRA BINS TO FIT LOUVERED PANELS																
	QMB 510	QMB 520	QMB 530	QMB 535	QMB 539	QMB 540	QMB 550	QMB 560	QMB 570	QUS 200	QUS 210	QUS 220	QUS 221	QUS 224	QUS 230	QUS 234	QUS 235	QUS 239	QUS 240	QUS 241	QUS 242	QUS 245	QUS 250	QUS 255	QUS 260	QUS 265	QUS 270
WLP-1836C	32	32	18	9	8	8	4	3	2	32	32	32	18	18	18	18	9	8	8	8	8	6	4	6	3	4	2
WLP-3036C	56	56	30	15	16	16	6	6	6	56	56	56	30	30	30	30	15	16	16	16	16	10	6	9	6	8	6
WLP-3048C	77	77	40	20	20	20	8	12	6	77	77	77	40	40	40	40	20	20	20	20	20	10	8	12	12	15	6



CORPORATE HEADQUARTERS
15800 NW 15th Avenue
Miami, Florida 33169

TOLL-FREE
1-800-685-4665
FAX
305-688-2790

sales@quantumstorage.com
www.quantumstorage.com

