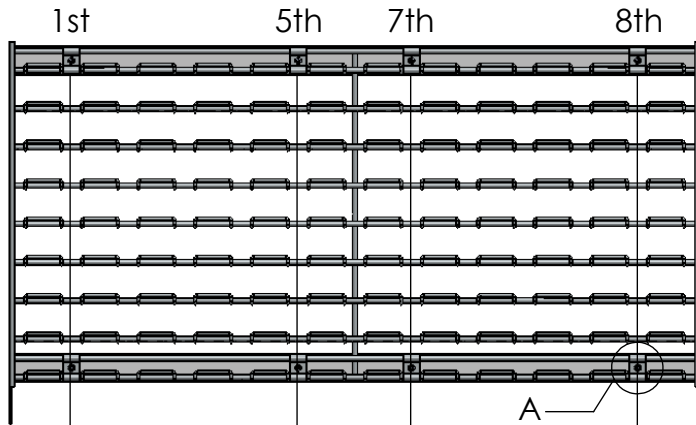
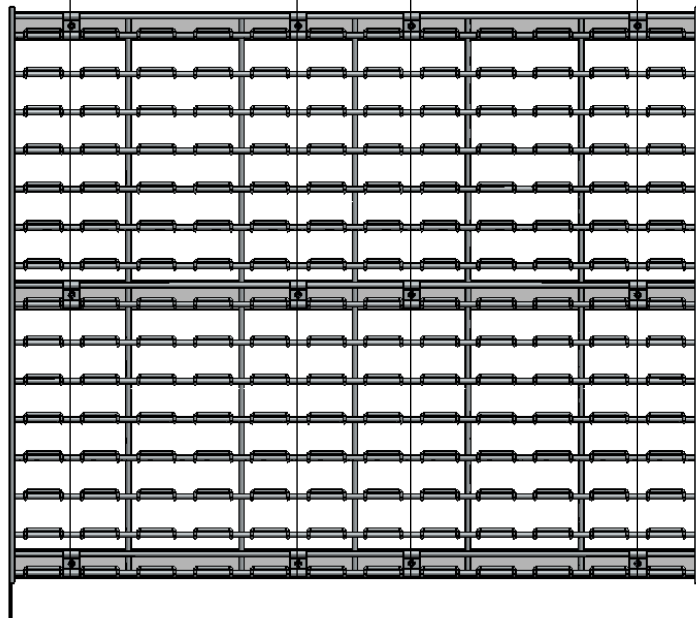


36 Series

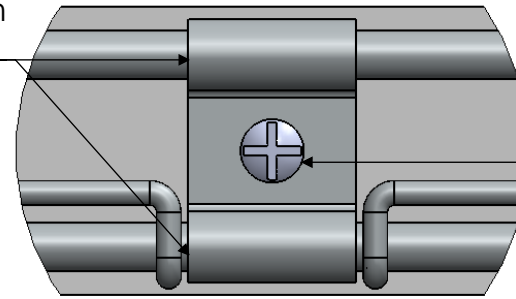
WLP-1836



WLP-3036



Clip hooks onto the top and bottom wires of the WLP.

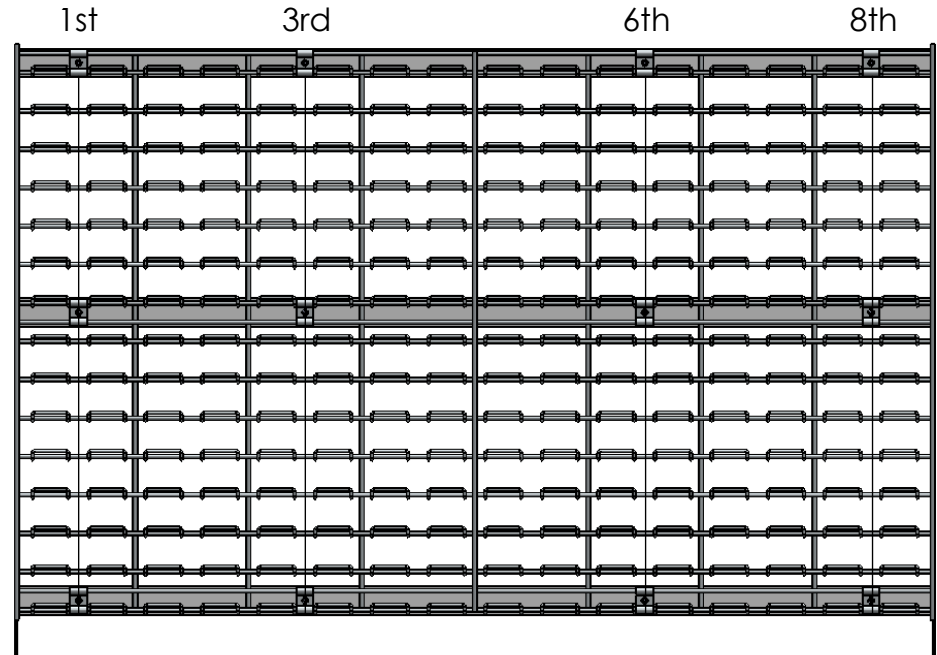


Screw goes through clip and bracket and attaches in the back with a nut.

DETAIL A  
SCALE 1 : 1

48 Series

WLP-3048



QUANTUM™ STORAGE SYSTEMS

How To Instructions: (NOTE: 2 people required for assembly.)

1. Assemble WS System.
2. Attach WS-HB to the WS System in desired positions.
3. Person A hold WLP so that the top, middle, and bottom 1" cross wires align with WS-HB holes.
4. Person B mount WLP-DMC to the front of WLP and align with hole locations.
5. Person B insert hardware through WLP-DMC. Connecting the WLP to the brackets with nuts.
6. Repeat steps 4 & 5 until unit is completely fastened.

DRAWN: 2013

Carlos Banks

Part Number:

**PROPRIETARY AND CONFIDENTIAL**  
THE INFORMATION CONTAINED IN THIS DRAWING IS THE SOLE PROPERTY OF QUANTUM STORAGE SYSTEMS. ANY REPRODUCTION IN PART OR AS A WHOLE WITHOUT THE WRITTEN PERMISSION OF QUANTUM STORAGE SYSTEMS IS PROHIBITED.

**WLP Mounting Instructions**

|          |       |              |
|----------|-------|--------------|
| SIZE     | REV   | SCALE: 1:24  |
| <b>A</b> | Orig. | SHEET 1 OF 1 |